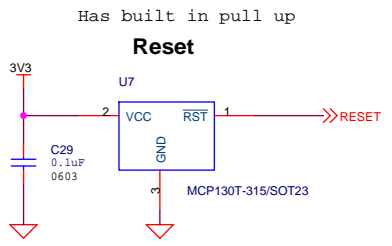


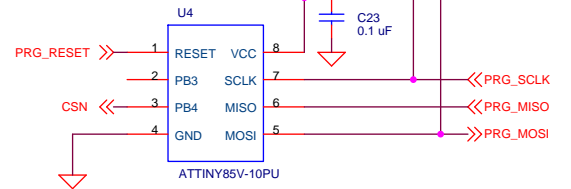
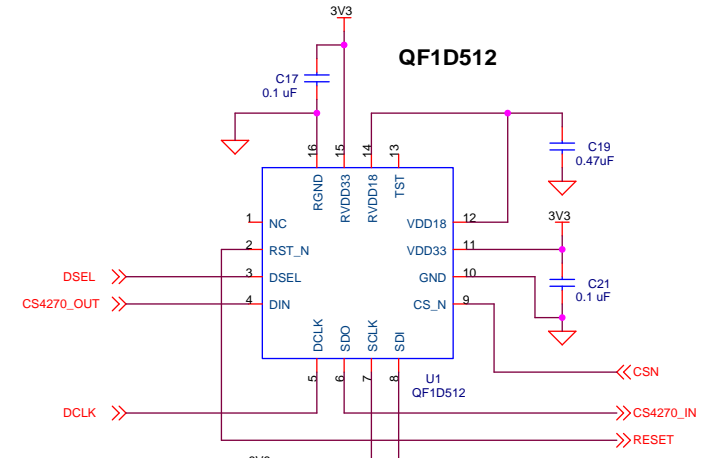
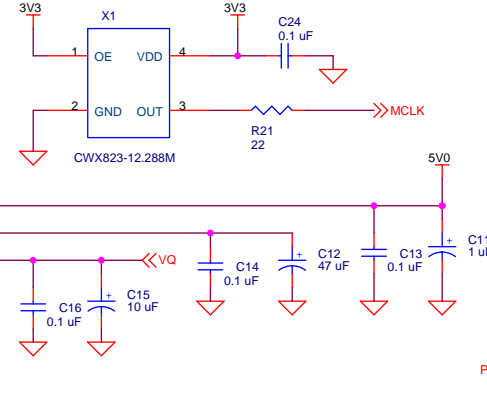
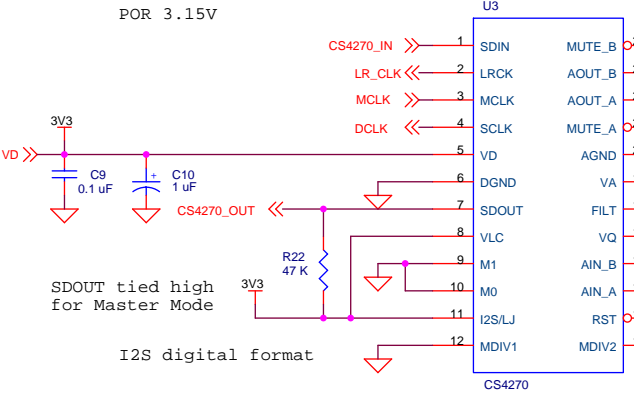
Audio Mojo Mini

Designed for Stand Alone Mode

Oscillator for CS4270

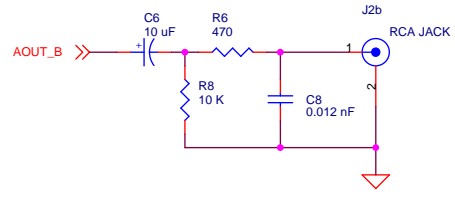
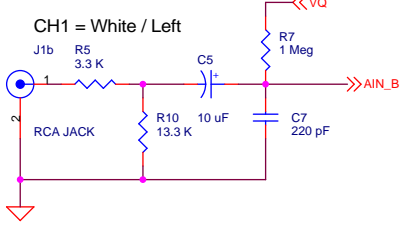
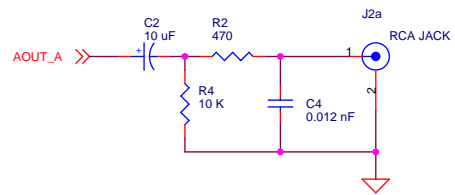
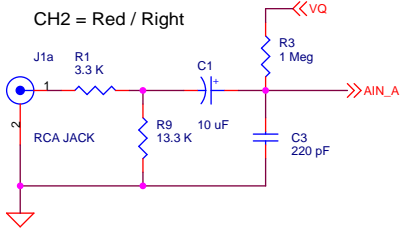


Set to 48 kHz sampling rate. See Cirrus Logic data sheet for other sampling rate options

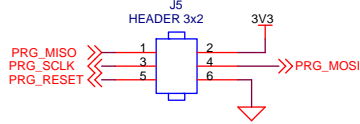


Auto Configure Auto Load

R9 and R10 = 1Vrms when 13.3K.
If 2.2K then 2Vrms input.



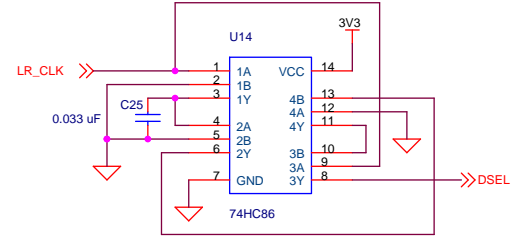
Optional Programming Header



5.0V Supply

3.3V Supply

Creates pulse at every LR clock transition point.



Title		
Audio Mojo Minimized Design		
Size	Document Number	Rev
B	Audio Mojo	B
Date:	Monday, August 11, 2008	Sheet 3 of 3